

## KOM-20

**Machine for managing mixed municipal waste presorting leftovers** for the goal of being able to separate organics from plastics in latter stages.

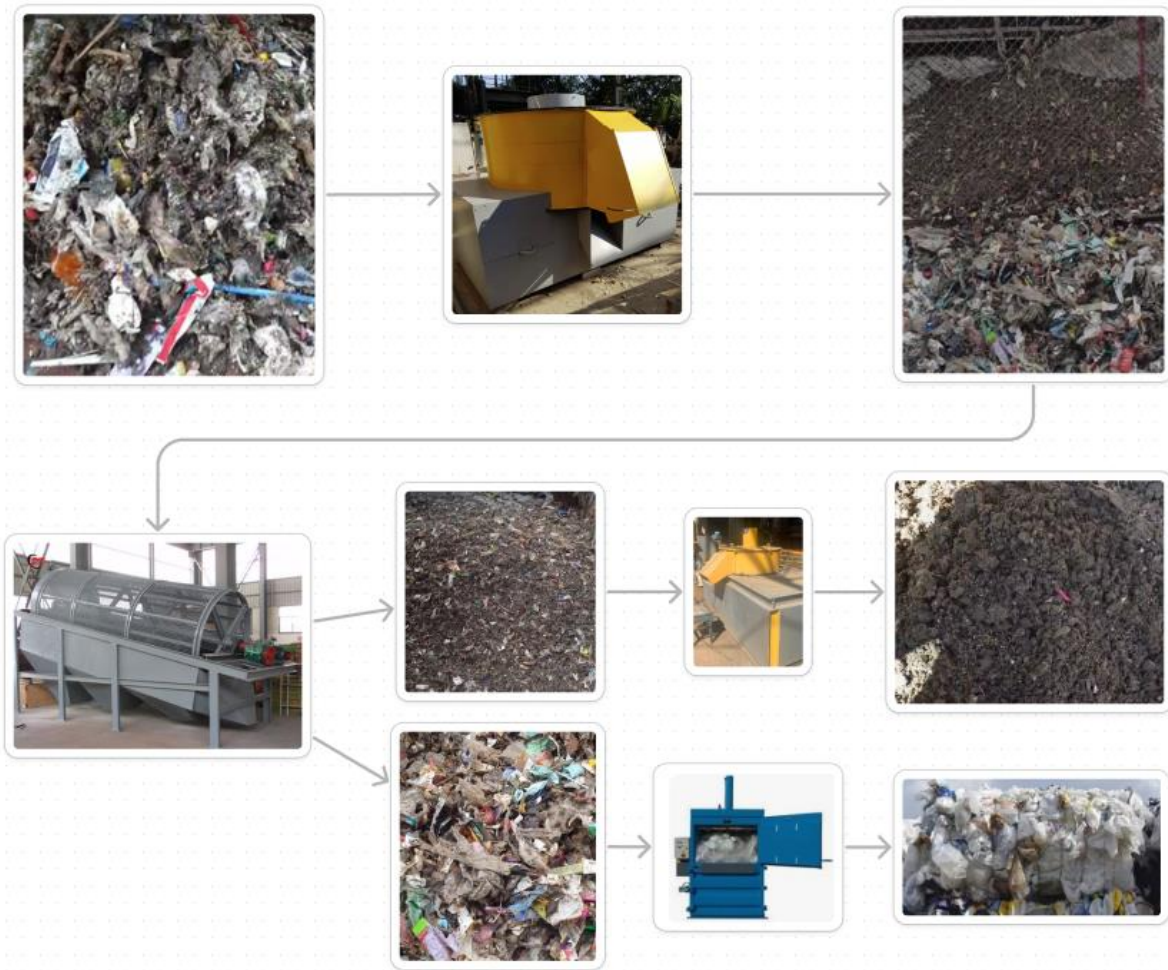
The machine is crushing and grinding all hard particles, dehumidifying the mixture, sanitizing and deodorizing the organics thus making it possible to separate organics from plastics in the next phases.



### KOM-20 is providing:

- One stage
  - grinding,
  - dehumidifying
  - desanitizing,
  - deodorizing of the mass;
- Low energy costs per 1 ton of recyclable material;
- Wearables changeover period not less than a year of operations.

**Overview of the process.** KOM-20 is the first initial step in the line



End product- sanitized technical soil:



Meanwhile the KOM-20 machine will manage the hardest materials, stone and metals:





**Technical specifications of KOM-20**

1	Productivity, t/h	20 or more
2	Initial particle size, mm	Up to 300
3	Finished product, mm	70+0 (less upon request)
4	Material acceptance	River galley, granite, metals, plastics etc.
5	Material hardness, units	8-9 according to Mohs
6	Grinding stages	one
7	Processing	dry or wet material
8	Permissible humidity on intake	up to 90%
9	Permissible humidity on outfeed	on demand
10	Ecology	within sanitary standards
11	Noise, vibration, dust formation	within sanitary standards
12	Utilisation	northern- tropical
13	Operating temperatures	-20 + 50°C
14	Dimensions, mm	3500x2800x2300
15	Weight, t	up to 12
16	Execution	on demand
17	Foundation	not required
18	Installed power, kW	80-90
19	Specific electricity consumption, kWh/t	0,8 – 1,5
20	Mains voltage V	380
21	Operators	0-1 per shift
22	Operatable	24 hours a day

**Sanitary norms of KOM-20 outfeed as by standard GOSTR 55571 - 2013**

1	The presence of pathogenic and pathogenic microorganisms, including enterobacteria (pathogenic serovars, Escherichia coli, salmonella, protea), enterococci (staphylococci, copostridium, bacilli), enteroviruses, cells/g	Not present
2	Presence of viable eggs and larvae of helminths, including nematodes (ascaridates, trichocephalus, strongylate, strongyloides), trematodes, cestodes	Not present
3	Cysts of intestinal pathogenic protozoa	Not present

KOM-20 contains fundamental features that distinguish it from all others machines used for these goals.